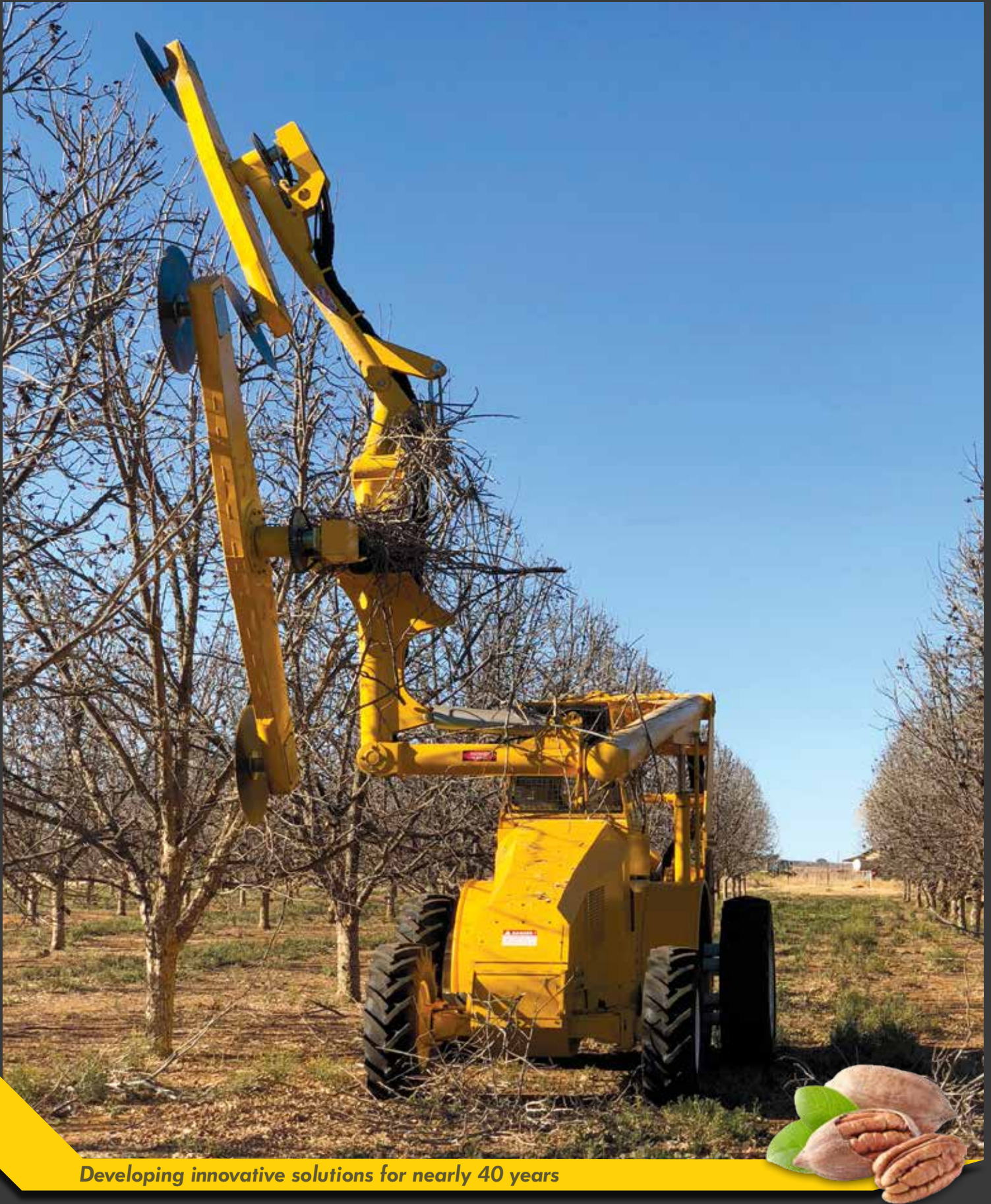


TH4500 T3

Topper / Hedger

TOL INCORPORATED



Developing innovative solutions for nearly 40 years

TH4500 T3

Topper / Hedger

www.tol-inc.com

- Suited to younger trees
- Suited to trees at a maximum height of 40 feet
- Variable-speed rotating wings
- Four 32-inch-diameter saw blades
- Available self-propelled, mounted on our 6-cylinder power unit

The TH4500 is the machine of choice for growers implementing a mechanical pruning program of their younger trees or those who intend to keep their trees to a maximum height of 40 feet.

The dual arm design provides greater productivity when compared to our very popular TH2000 Pecan Topper Hedger. The unique design of the TH4500 also provides the ability to hedge the side of the tree while at the same time angle topping at a 50 degree angle.

Specifications:

- Cutting Pass: 24ft
- Max Hedging Height: 53ft
- Max Topping Height at 45 Degrees: 40ft
- Transport Height: 11ft 10in
- Cutting Capacity: 6in
- Engine: 155 HP

*All dimensions are approximated.



The machines pictured in this brochure are intended to illustrate the general appearance and features of these products. They are equipped as specified by a particular customer and may or may not show items that are optional or recommended. Specifications, illustrations, and descriptive materials herein were accurate as known at the time this publication was approved for printing. We reserve the right to discontinue models or options at any time or to change specifications and materials, equipment and design without notice and without incurring obligation.

TOL INCORPORATED

800.732.2142 • 559.686.2844 • contact@tol-inc.com